

FERMANAGH LEARNING COMMUNITY

Saint Fanchea's College is an active member of the Fermanagh Learning Community which contains a number of post primary schools in County Fermanagh. Working in partnership with other schools, Post 16 pupils will have the opportunity to follow an alternative A-Level / Level 3 course if they decide not to follow the Applied GCE in Business in Saint Fanchea's College. The table below illustrates some of the subjects offered during 2020-2021.

School	Course
Saint Fanchea's College	BTEC L3 Certificate in Business Studies
Devenish College	BTEC L3 Business Studies Art & Design
St. Joseph's College	BTEC L3 ICT
Enniskillen Royal Grammar School	German Music
Mount Lourdes GS	Irish
St. Michaels College	History
Erne Integrated College	Sport
South West Colleg	Moving Image Arts Software Systems Travel & Tourism Performing Arts Engineering Creative Media Production



BTEC Level 3 National Extended Certificate in BUSINESS

The BTEC Level 3 course in Business Studies (equivalent to one A-Level) is delivered by a team of experienced teachers through a range of portfolio and examination based units of work.

AS Units

UNIT TITLE	
Recruitment & Selection	Portfolio
Finance	Exam

A2 Units

UNIT TITLE	
Business Aims	Portfolio
Marketing Campaign	Controlled Assessment

The BTEC L3 National Certificate in Business is a very dynamic course which allows students to examine the business environment around them. It is one of the most popular subjects at A-Level allowing candidates progression into many different university courses. The course has links to the world of work and proves beneficial to those considering a career in a wide range of professional areas, including accountancy, management, finance, insurance, banking and many more.



CONTACT DETAILS

Please call for an appointment when GCSE results are published on Thursday 12th August 2021

Telephone: 02866322919

Email: info@stfancheascollege.enniskillen.ni.sch.uk



Saint Fanchea's College



POST 16 PROVISION 2021 – 2022



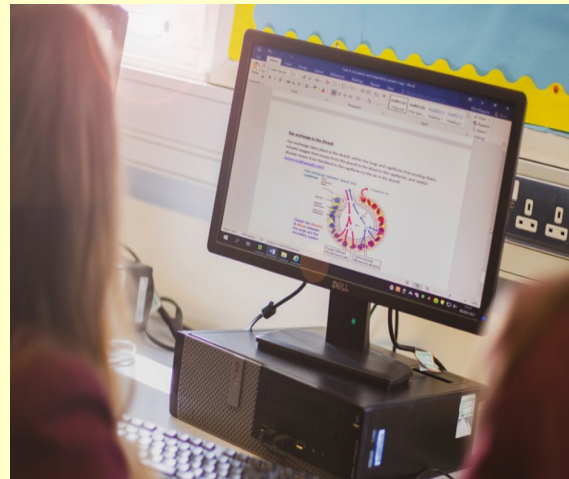


Saint Fanchea's College is a happy, caring and successful college with a child-centred approach and high academic standards. Our staff are dedicated, highly qualified and experienced. In Saint Fanchea's College we aim to build on the strong Catholic ethos which permeates all aspects of our college life. We endeavour to provide a balanced and broad curriculum which supports the spiritual, moral, cultural, emotional and physical development of each of our pupils. We encourage our pupils to develop strong personal qualities such as tolerance, forgiveness, compassion, and inclusion of others enabling them to become caring and considerate members of the community. We aim to create a caring, happy, well ordered environment where pupils are eager to learn and in which all of our college community feel respected and valued.



POST 16 CURRICULUM

Pupils who return to Year 13 are offered a varied Post -16 two year programme which aims to enhance their existing qualifications and equip them to make a purposeful career choice. Successful completion of the programme leads to the award of Applied GCE Double Award in Health & Social Care (equivalent to two A- Levels) and a BTEC National Extended Certificate in Business (equivalent to one A- Level). Pupils may also choose to study an alternative third A -Level from another school in partnership with the Fermanagh Learning Community. The Post-16 curriculum enables pupils to gain qualifications which can be used for employment or as an entrance qualification to courses in further education colleges / universities. Careers guidance, work experience and group tutorial work are essential elements of these Post -16 courses.



GCE A-LEVEL (DOUBLE AWARD) HEALTH & SOCIAL CARE

The double award Applied GCE course in Health & Social Care (equivalent to two A-Levels) is delivered by a large team of experienced teachers through a range of portfolio and examination based units of work.

AS Units

A2 Units

UNIT TITLE		UNIT TITLE	
Promoting Positive Care	Portfolio	Applied Research	Portfolio
Communication in Care Settings	Portfolio	Body Systems & Disorders	Portfolio
Health & Well Being	Exam	Providing Services	Exam
Human Physiology	Exam	Health Promotion	Portfolio
Safeguarding	Portfolio	Supporting the Family	Portfolio
Holistic Therapies	Portfolio	Human Nutrition & Health	Exam

The career pathways taken by former Post 16 pupils from Saint Fanchea's College who have followed this course include careers in nursing, social work, occupational health, human resource management and early years teaching and development.

"I have so many brilliant memories from Saint Fanchea's, the teachers were all so helpful. They were always willing to help in any way they could. I also made so many great friends during my time in Saint Fanchea's and there were so many learning opportunities. I always remember how friendly everyone was in Saint Fanchea's, and how everyone knew each other's name. Saint Fanchea's College has given me the best possible start to my career. I studied A-Level Health and Social Care which is very useful for nursing. Also, I had so many volunteering opportunities within the school that helped with my university application. I also think that the hard work the teachers put in, helped me to achieve the grades I needed for nursing."
Aisling Hoy



Aisling Hoy

Aisling is currently working as a qualified paediatric nurse in the South West Acute Hospital

